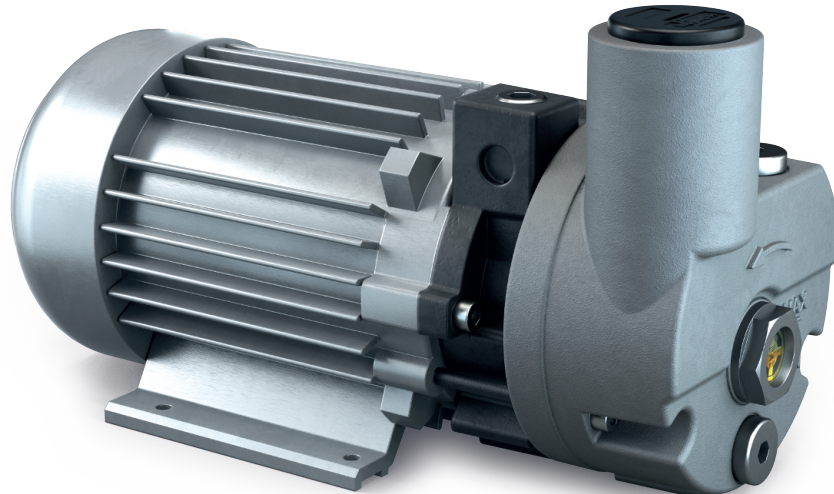


R5 PB 0004/0008 C

Oil-lubricated rotary vane vacuum pumps



VACUUM SOLUTIONS



Compact

Block construction, reduced height and weight, ideal for installations in confined spaces

Reliable

Robust construction, highly durable vanes, proven rotary vane technology, long service life

Quiet

Low noise level, ideal for use in deli counters or restaurants

Accessories

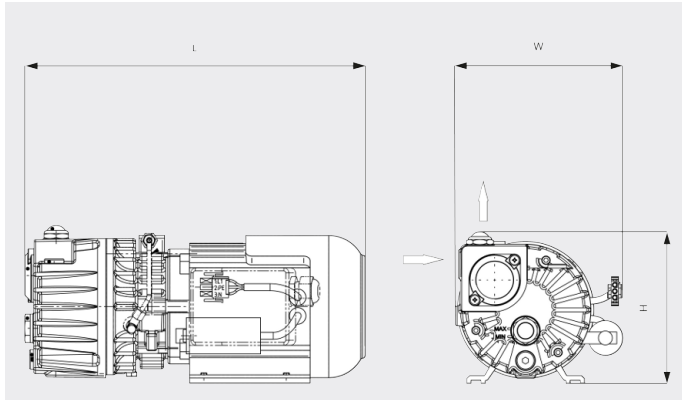
- Gas-ballast valve (for R 5 PB 0008 C only)
- Various inlet filters
- Vacuum pump oils for all applications

R5 PB 0004/0008 C

Oil-lubricated rotary vane vacuum pumps

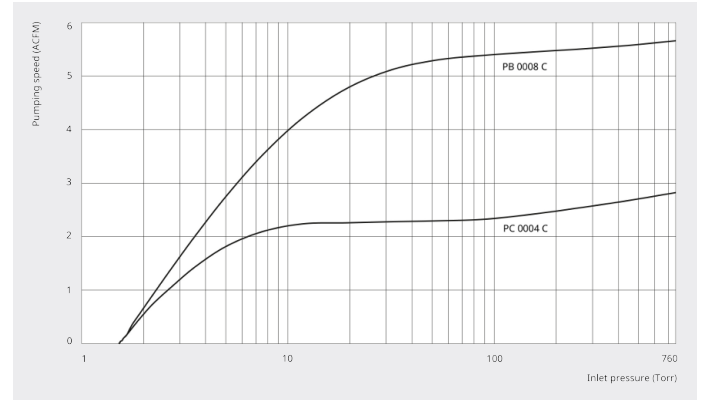


Dimensional drawing



Pumping speed

Air at 70°F. Tolerance: ± 10%



	R5 PB 0004 C	R5 PB 0008 C
Nominal pumping speed	2.8 ACFM	5.6 ACFM
Ultimate pressure	1.5 TORR	1.5 ACFM
Nominal motor rating	0.2 HP	0.6 HP
Nominal motor speed	3600 RPM	3600 RPM
Noise level (ISO 2151)	61 dB(A)	64 dB(A)
Oil capacity	0.1 qts.	0.3 qts.
Weight approx.	11.4 Lbs.	22.7 Lbs.
Dimensions (L x W x H)	9.1 x 5.2 x 5.6 inches	13 x 6.5 x 6 inches
Gas inlet	G ¼	G ¾"

DO YOU WANT TO KNOW MORE?

Get in touch with us directly!
info@buschusa.com or +1 757 463 7800



CONTACT FORM



CALL NOW