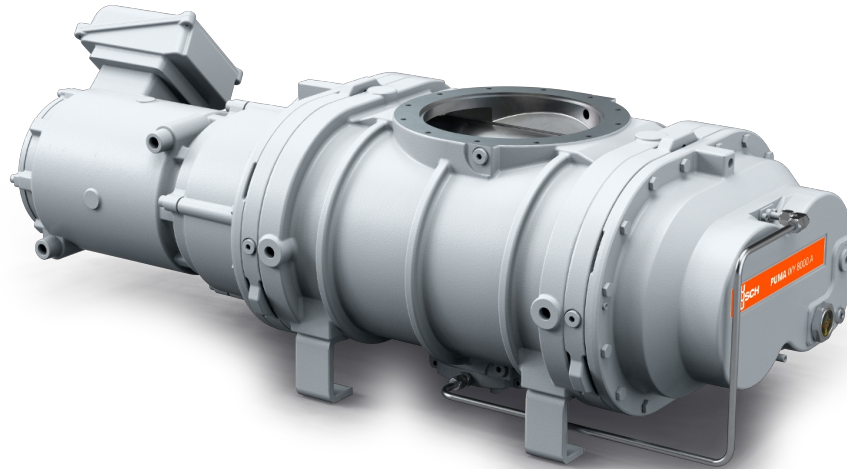


# PUMA WY 8000 A

Vacuum booster



VACUUM SOLUTIONS



## Reliable

Special lobe design to prevent powder and particle deposits, robust construction made of GGG40 material, leak-tight

## High performance

Specially designed for harsh applications in the medium and high vacuum range, including semiconductor processes with powder and dust, excellent volumetric efficiency

## Flexible

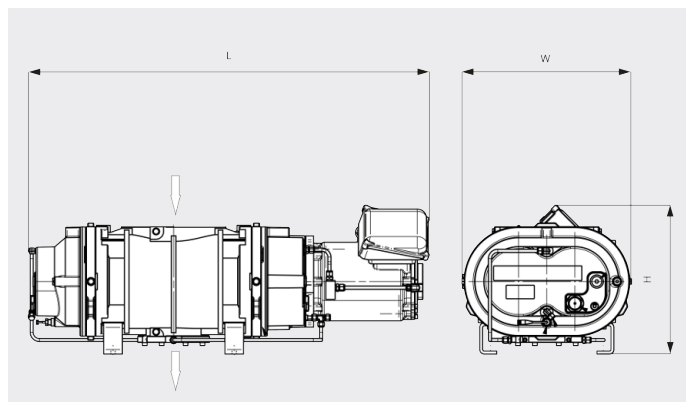
Reliable performance under varying operating conditions, boosts the performance of all types of backing pumps

# PUMA WY 8000 A

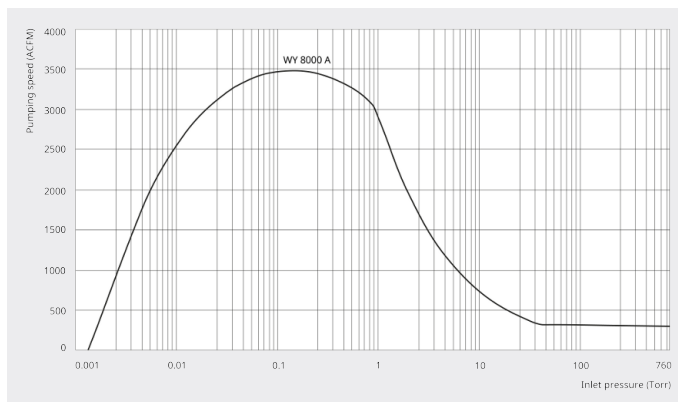
Vacuum booster



Dimensional drawing



Pumping speed  
Air at 70°F. Tolerance:  $\pm 10\%$



PUMA WY 8000 A	
Nominal pumping speed	4770 ACFM
Pumping speed	3485 ACFM
Max. differential pressure	11.25 TORR
Nominal motor rating	15 HP
Nominal motor speed	5400 RPM
Weight approx.	1140 Lbs.
Leakage rate	$< 0.75 \cdot 10^{-7}$ mbar · l/s
Dimensions (L x W x H)	50.5 x 21.4 x 18.7 inches
Gas inlet / outlet	DN 250 ISO-F / DN 100 ISO-F

## DO YOU WANT TO KNOW MORE?

Get in touch with us directly!  
[info@buschusa.com](mailto:info@buschusa.com) or +1 757 463 7800



CONTACT FORM



CALL NOW