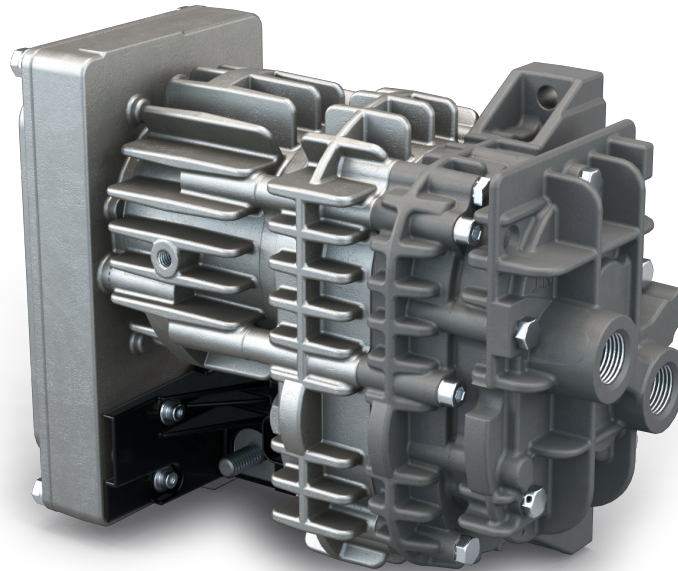


MINK MH 0018 A

Dry claw compressor



VACUUM SOLUTIONS



Hydrogen-approved

For recirculation of hydrogen in fuel cells under extreme conditions, only hydrogen-approved compressor in the market

Efficient

Latest claw technology, intelligent variable speed drive

Compact

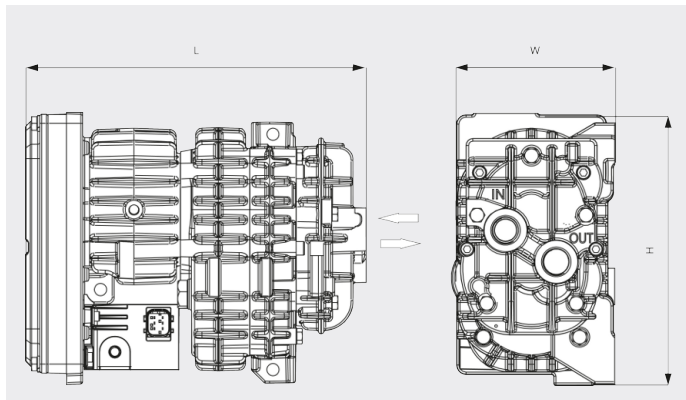
Small footprint due to "all-in-one" design with integrated variable speed drive

MINK MH 0018 A

Dry claw compressor

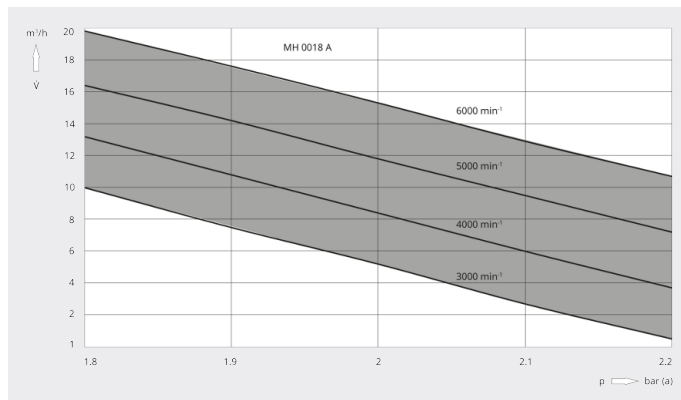


Dimensional drawing



Pumping speed

Air at 70°F. Tolerance: ± 10%



MINK MH 0018 A	
Volume flow	max. 10.6 ACFM
Overpressure (at inlet)	max. 5.8 PSIG
Leakage rate (EU 79/2009 and 406/2010)	< 10 Ncm ³ /h
Nominal motor rating	max. 0.7 HP
Nominal motor speed	480 – 6000 RPM
Noise level (ISO 2151)	68 / 73 dB(A) (3000 / 6000 RPM)
Oil capacity	0.11 qts.
Weight approx.	14.3 Lbs.
Dimensions (L x W x H)	9.8 x 4.7 x 7.8 inches

DO YOU WANT TO KNOW MORE?

Get in touch with us directly!
info@buschusa.com or +1 757 463 7800



CONTACT FORM



CALL NOW