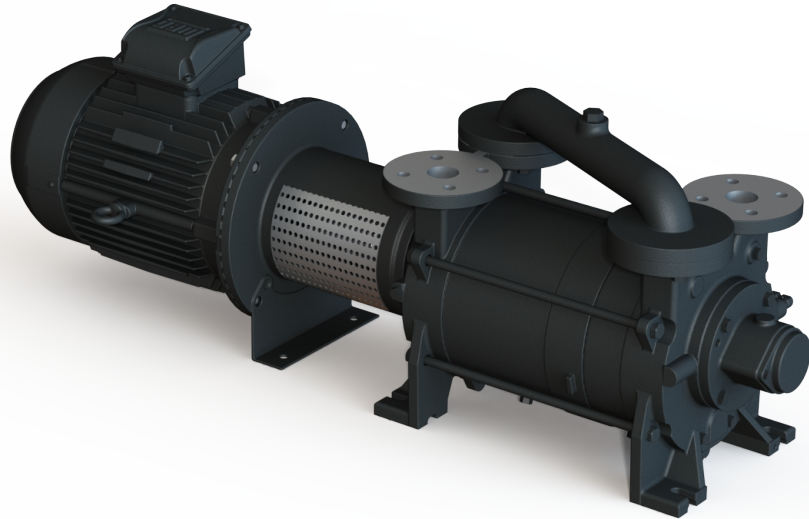


DOLPHIN LB 0063-0184 A

Liquid ring vacuum pumps



VACUUM SOLUTIONS



Robust

Proven technology, durable two-stage construction

Reliable

Extremely high vapor and particle tolerance

Flexible

Wide range of construction materials, including cast iron (EN-GJL-200), many grades of stainless steel and even titanium, ATEX-certified version available (Cat 1(i)/2(o) IIC T5), operating fluids other than water possible, operation as compressor possible

Accessories, spare parts and options

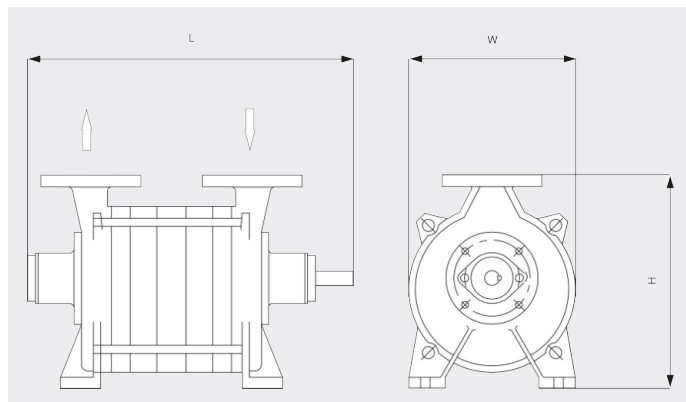
- Partial or total recirculation systems
- Liquid separator
- Cavitation protection
- Heat exchanger
- Gas ejector
- Wide selection of motors
- Non-return valves
- Vacuum relief valves

DOLPHIN LB 0063-0184 A

Liquid ring vacuum pumps

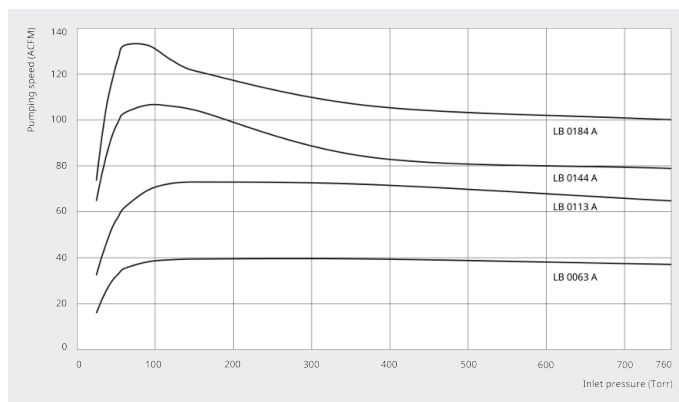


Dimensional drawing



Pumping speed

Air at 70°F. Tolerance: ± 10%



	DOLPHIN LB 0063 A	DOLPHIN LB 0113 A	DOLPHIN LB 0144 A	DOLPHIN LB 0184 A
Nominal pumping speed	39.0 ACFM	73.0 ACFM	107.0 ACFM	132.0 ACFM
Ultimate pressure	25 TORR	25 TORR	25 TORR	25 TORR
Nominal motor rating	5.0 HP	7.5 HP	7.5 HP	10.0 HP
Nominal motor speed	1750 RPM	1750 RPM	1750 RPM	1750 RPM
Noise level (ISO 2151)	72 dB(A)	72 dB(A)	72 dB(A)	72 dB(A)
Weight approx.	159 Lbs.	161 Lbs.	214 Lbs.	245 Lbs.
Dimensions (L x W x H)	26.1 x 9.8 x 12.6 inches	27.7 x 9.8 x 12.6 inches	30 x 10.6 x 15.9 inches	32.4 x 10.6 x 15.9 inches
Gas inlet / outlet	1½" / 1½"	1½" / 1½"	1½" / 1½"	1½" / 1½"

DO YOU WANT TO KNOW MORE?

Get in touch with us directly!

info@buschusa.com or +1 757 463 7800



CONTACT FORM



CALL NOW