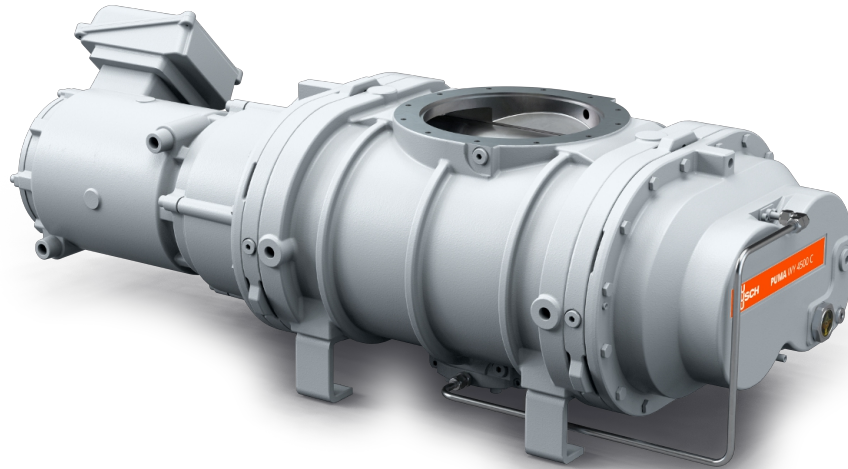


PUMA WY 2000/4500 C

Vacuum boosters



VACUUM SOLUTIONS



Reliable

Solid lobe design, robust construction made of GGG40 material, leak-tight, reliable under varying operating conditions

High performance

Excellent volumetric efficiency, increases the performance of a vacuum system by up to a factor of ten, specially designed for medium and high vacuum including semiconductor applications

Flexible

Can be flanged directly on the system at any position, boosts the performance of all types of backing pumps

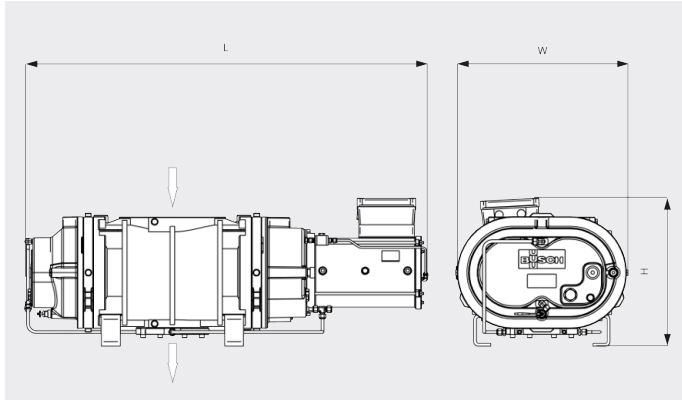
PUMA WY 2000/4500 C

Vacuum boosters



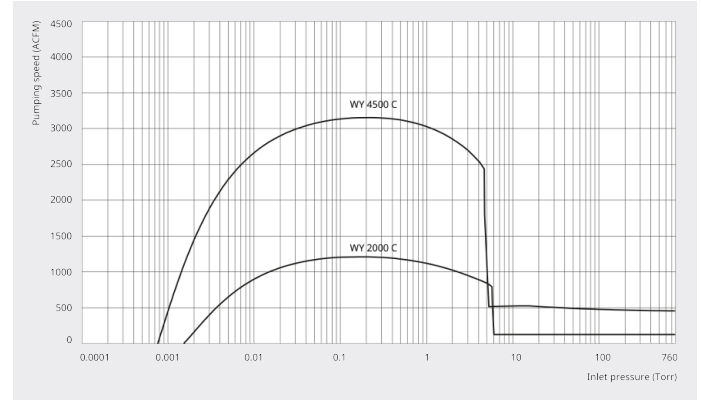
VACUUM SOLUTIONS

Dimensional drawing



Pumping speed

Air at 70°F. Tolerance: ± 10%



	PUMA WY 2000 C	PUMA WY 4500 C
Nominal pumping speed	1435 ACFM	3180 ACFM
Pumping speed	1003 ACFM	2530 ACFM
Max. differential pressure	40 TORR	25 TORR
Nominal motor rating	8.9 HP	18.1 HP
Nominal motor speed	3600 RPM	3600 RPM
Weight approx.	530 Lbs.	1280 Lbs.
Leakage rate	$< 0.75 \cdot 10^{-7}$ mbar · l/s	$< 0.75 \cdot 10^{-7}$ mbar · l/s
Dimensions (L x W x H)	36.5 x 15.4 x 12.6 inches	50 x 21.4 x 16.9 inches
Gas inlet / outlet	DN 160 ISO-F / DN 100 ISO-F	DN 250 ISO-F / DN 160 ISO-F

DO YOU WANT TO KNOW MORE?

Get in touch with us directly!
info@buschusa.com or +1 757 463 7800



CONTACT FORM



CALL NOW