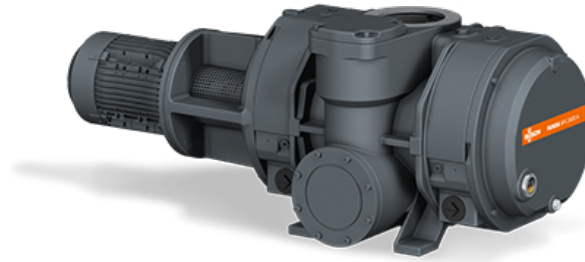


PANDA WV 4500 B

Vacuum boosters



VACUUM SOLUTIONS



Discover all advantages of the product series PANDA WV

Reliable

Solid lobe design, robust construction, reliable under varying operating conditions, barrier gas connection

High performance

Excellent volumetric efficiency, high ultimate pressure, increases the performance of a vacuum system by up to a factor of ten, integrated bypass valve, specially designed for rough and medium vacuum applications

Flexible

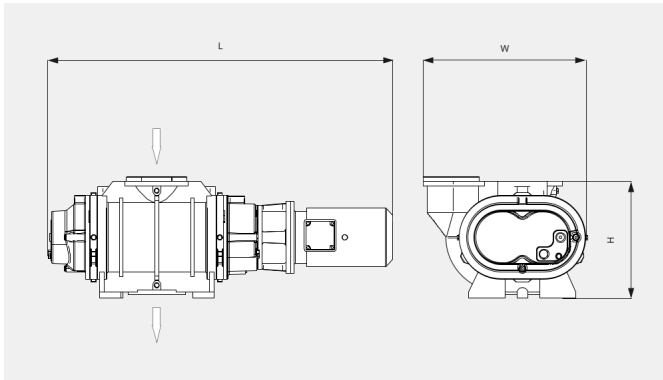
Can be flanged directly on the system at any position, boosts the performance of all types of backing pumps, with vertical or lateral discharge, perfectly suited for a wide range of applications

PANDA WV 4500 B

Vacuum boosters

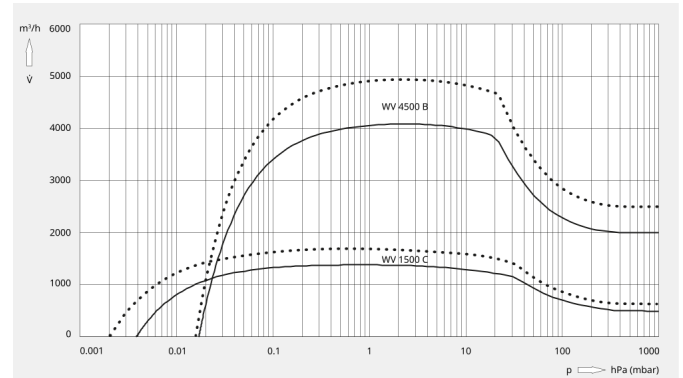


Dimensional drawing



Pumping speed

Air at 20 °C. Tolerance: ± 10%



The following technical values refer to ISO 50 Hz

PANDA WV 4500 B	
Nominal pumping speed	4500 m³/h
Pumping speed	4100 m³/h
Max. differential pressure	25 hPa (mbar)
Nominal motor rating	11.0 kW
Nominal motor speed	3000 min ⁻¹
Weight approx.	690 kg
Dimensions (L x W x H)	1443 x 690 x 510 mm
Gas inlet	DN 250 ISO
Gas outlet	DN 160 ISO

The following technical values refer to ISO 60 Hz

PANDA WV 4500 B	
Nominal pumping speed	5400 m³/h
Pumping speed	4950 m³/h
Max. differential pressure	25 hPa (mbar)
Nominal motor rating	12.6 kW
Nominal motor speed	3600 min ⁻¹

PANDA WV 4500 B

Vacuum boosters



VACUUM SOLUTIONS

PANDA WV 4500 B	
Weight approx.	690 kg
Dimensions (L x W x H)	1443 x 690 x 510 mm
Gas inlet	DN 250 ISO
Gas outlet	DN 160 ISO

DO YOU WANT TO KNOW MORE

Please contact us!
sales@busch.co.nz or +64 (0)800 428 724



CONTACT FORM



CALL US NOW