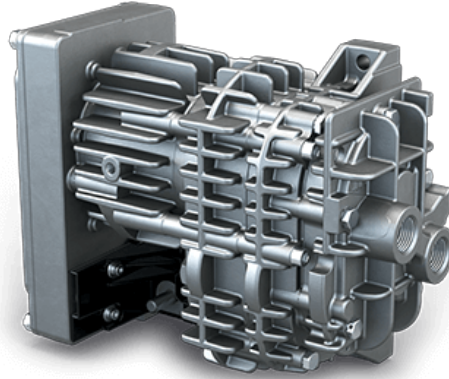


MINK MA 0018 A

Dry claw compressor



Discover all advantages of
the product series MINK MA

Robust

Specially designed to transport air in mobile applications, may be operated under extreme conditions, in temperature ranges between -40 °C and +100 °C and at elevations between -1,000 m and 4,000 m, resistant to severe vibration

Efficient

Latest claw compressor technology, dry and contact-free compression, no contamination of pumped medium, intelligent variable speed drive, low energy consumption, long life cycle without servicing

Compact

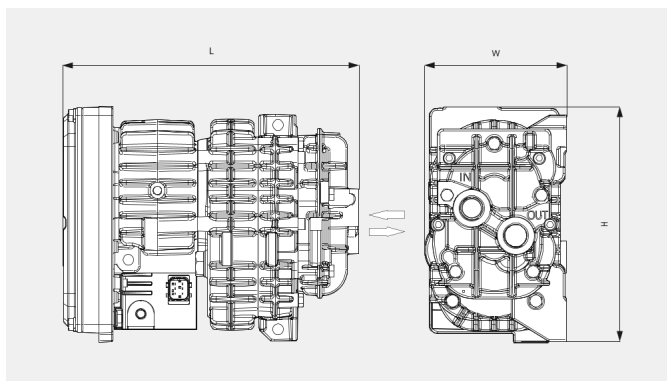
Small footprint due to "all-in-one" design

MINK MA 0018 A

Dry claw compressor

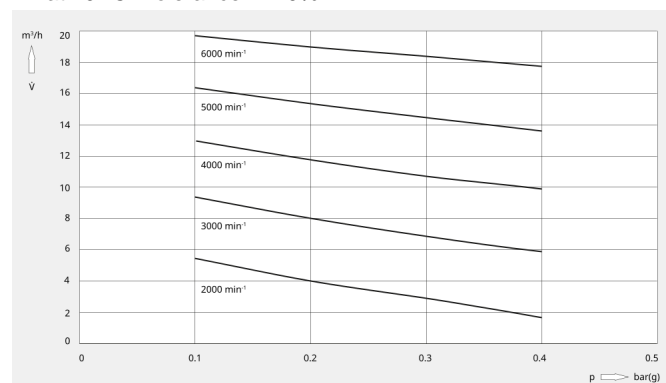


Dimensional drawing



Volume flow

Air at 20 °C. Tolerance: $\pm 10\%$



The following technical values refer to ISO 50 Hz

MINK MA 0018 A	
Volume flow (at inlet)	18 m³/h
Overpressure	0.4 bar(g)
Nominal motor rating	0.5 kW
Nominal motor speed	6000 min⁻¹
Ambient temperature	-40 ... +40 °C
Noise level (ISO 2151)	73 dB(A)
Weight approx.	6.5 kg
Dimensions (L x W x H)	249.5 x 120 x 199 mm
Gas inlet	G ½"
Gas outlet	G ½"

The following technical values refer to ISO 60 Hz

MINK MA 0018 A	
Volume flow (at inlet)	18 m³/h
Overpressure	0.4 bar(g)
Nominal motor rating	0.5 kW
Nominal motor speed	6000 min⁻¹

MINK MA 0018 A

Dry claw compressor



MINK MA 0018 A	
Ambient temperature	-40 ... +40 °C
Noise level (ISO 2151)	73 dB(A)
Weight approx.	6.5 kg
Dimensions (L x W x H)	249.5 x 120 x 199 mm
Gas inlet	G ½"
Gas outlet	G ½"

DO YOU WANT TO KNOW MORE

Please contact us!
sales@busch.co.nz or +64 (0)800 428 724



CONTACT FORM



CALL US NOW